

# 600



---

Hi-res, data-secure  
direct-to-card printing.

---



**MAGiCARD**

# 600

## Security, compliance and peace of mind: built in.

A world-class ID printing solution delivering faster print speeds, stringent security and the finest detail, the Magicard 600 integrates seamlessly with existing infrastructure to deliver secure processing of ID credentials.

**Wi-Fi connectivity** - as standard via supplied dongle, - IEEE 802.11b/g/n compliant with connection of speeds up to 300Mbps. Supports WPA and WPA2 encrypted connection (access point dependent).

**An eye for detail** - capable of printing at 600 x 300 dpi\*, the Magicard 600 allows you to include micro text - and make it legible.

**Superior quality** - The Magicard 600 offers a wide colour spectrum so printing is more vibrant and colour-rich. That means a truer representation of the subject - perfect for photographs on ID cards and more accurate depiction of corporate logos and other images.

**Plug and play** - to get you up and running quickly and easily, the Magicard 600 integrates with existing network infrastructure 'out of the box' via USB, minimising set-up time and requiring little technical knowledge.

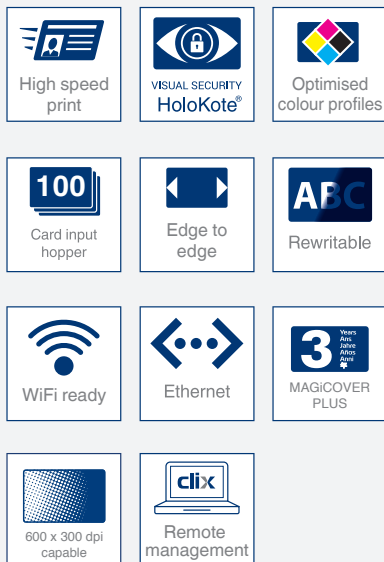
**Faster speeds** - each full colour, single-sided card, with HoloKote®, can be printed in under 20 seconds giving the Magicard 600 the ability to print up to 190 cards per hour.

**Updates and upgrades** - The Magicard 600 is easy to keep up-to-date with the latest features and fixes as and when they're available.

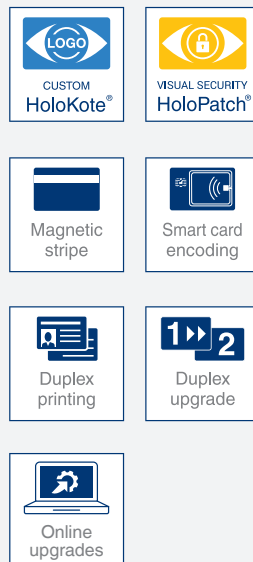
\*monochrome only

## Printer features

### Standard



### Optional

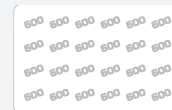


(monochrome only)

## Card security options

### HoloKote®

A standard security watermark printed across the entire card surface. The 600 HoloKote® features 10 standard designs.



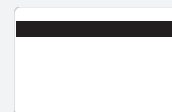
### Custom HoloKote®

A fully flexible and customisable secure watermark printed across the entire card surface.



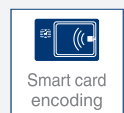
### Magnetic stripe

The 600 can be specified with ISO standard 7811 compatible HiCo encoding of magnetic stripe cards.



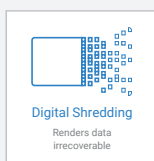
### Smart card encoding

Smart card encoding options: Contact chip, Mifare®, Desfire®, iClass®.

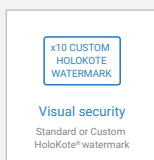




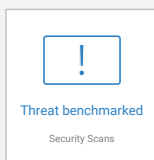
## Secure



**Digital shredding™** - once data has been used for the print job, it is fragmented, rendering it irrecoverable, helping to ensure the Magicard 600 is not a repository for data.



**Anti-fraud** - the Magicard 600 has the ability to print a customisable HoloKote® watermark on every card. Each device has the built-in ability to receive up to 10 anti-fraud customised HoloKotes® direct to the printer via Magicard's web tool.



**Threat benchmarked** - we run security scans against the comprehensive vulnerability assessment tool, Nessus Pro, one of the most widely deployed security technologies in the world and push regular updates to the device, ensuring that the printer software and associated system configuration conform to the highest levels of security.

## Warranty\*\*



The Magicard 600 is backed by the best warranty in the industry. The fully comprehensive three-year MagiCover Plus package includes printhead cover and a hot-swap loaner service. Users will never be without their printer and always have full access to the global Magicard technical support team.

\*\*Available in the UK, EU, North America and other selected territories. 3 years or 250,000 panels limited manufacturer's warranty covering electronic / electrical failure and bad workmanship.

# 600

## Printer specifications

### Print mode

Colour dye sublimation, monochrome thermal printing and rewritable technology.

### Print speed - single-sided

**Colour:** 19 seconds per card / 190 cards per hour.

**Monochrome:** 5 seconds per card / 720 cards per hour.

### Card security

A HoloKote® security watermark can be printed across the card surface. With the Magicard 600, this watermark can be customised to an organisation's logo, or some other unique security design. LYNK enables the secure online delivery of up to ten bespoke HoloKotes to the printer through the driver interface.

When used with HoloPatch® cards, one area of the HoloKote® watermark can be highlighted as a high visibility security seal.

### Encoding security options

**Magnetic stripe encoding:** HiCo and LoCo ISO 7811.

**Smart card encoding:** Contact chip, MIFARE®, DESFire® and iClass®. Others available.

### Warranty\*\*

3 years MagiCoverPlus with full printhead coverage and free loaner service - Available in North America, EU and other selected territories. \*\*Elsewhere a minimum of one year limited depot warranty.

### Card capacity

100 card feeder, 70-card stacker.

### Printer interfaces

High Speed USB 2.0, USB 3.0 compatible - Type B, 10/100 Ethernet. External Host USB Port. Wi-Fi via supplied dongle.

### Driver compatibility

Windows 7, 8, 10, 11 (32 and 64bit) Windows server 2008, 2012, 2016.  
Linux with CUPS support and Mac OS X 10.9.0 upwards.

### Weight

4.7kg / 10.4lb

### Power source

External power supply 100-240V 50-60Hz autoranging.

### Dimensions

475.5mm L x 211.5mm W x 248mm H / 18.9" L x 8.3" W x 9.8" H  
(including feeder and stacker.)

### Operating environment

Sheltered office environment 10°C to 30°C / 50°F to 85°F.

## Consumables

### Part No.

### Dye film

Magicard 600 YMCKO dye film 300 images	MB300YMCKO/2*
Magicard 600 YMCKO dye film 300 images	MB300YMCKO/3*
Magicard 600 YMCKO dye film 200 images	MB200YMCKO/2*
Magicard 600 YMCKO dye film 200 images	MB200YMCKO/3*
Magicard 600 YMCKOK dye film 250 images	MB250YMCKOK/2*
Magicard 600 YMCKOK dye film 250 images	MB250YMCKOK/3*
Magicard 600 KO film 600 images	MB600KO/2*
Magicard 600 KO film 600 images	MB600KO/3*
Magicard 1000 continuous resin monochrome film 1000 images	MA1000K

(\* Region codes; /2 - USA; /3 - Europe, Japan, South Korea and Australasia)

### Card types/thickness

CR80/CR79 PVC ISO blank cards, HiCo magnetic stripe, smart cards, self-adhesive, rewritable and HoloPatch® cards. 0.51mm to 1.02mm / 0.020" to 0.040".

### HoloPatch® cards

Use HoloKote® with HoloPatch® for a highly-visible gold seal on the card.

### Cleaning supplies

Cleaning kit - 5 cleaning cards, 1 pen.	3633-0053
Cleaning roller kit - 5 cleaning rollers, 1 metal roller bar.	3633-0054

## Variants

### Part No.

Magicard 600 Uno	3652-5001/2*
Magicard 600 Uno	3652-5001/3*
Magicard 600 Uno Mag	3652-5002/2*
Magicard 600 Uno Mag	3652-5002/3*
Magicard 600 Uno Smart	3652-5003/2*
Magicard 600 Uno Smart	3652-5003/3*
Magicard 600 Uno Mag Smart	3652-5004/2*
Magicard 600 Uno Mag Smart	3652-5004/3*
Magicard 600 Duo	3652-5021/2*
Magicard 600 Duo	3652-5021/3*
Magicard 600 Duo Mag	3652-5022/2*
Magicard 600 Duo Mag	3652-5022/3*
Magicard 600 Duo Smart	3652-5023/2*
Magicard 600 Duo Smart	3652-5023/3*
Magicard 600 Duo Mag Smart	3652-5024/2*
Magicard 600 Duo Mag Smart	3652-5024/3*

(\* Region codes; /2 - USA; /3 - Europe, Japan, South Korea and Australasia)

## Online upgrades

### Online double-sided upgrade

Upgrade the Magicard 600 Uno to the Magicard 600 Duo. Delivered online through the driver interface.

### Online Custom HoloKote® upgrade

Grid or full card pattern. Up to ten custom designs can be added through the driver interface using the online HoloKote® tool.



\*\*Warranty subject to the observance of specific conditions of use and maintenance, as well as the use of certified 'Original Magicard' dye films.

Magicard is a registered trademark of Magicard Ltd. All other trademarks, brand names, or product names belong to their respective holders.

The information contained in this document reflects the current state of design and we reserve the right to change the specification without notice or obligation.



### Magicard Ltd - Headquarters and manufacturing centre

Hampshire Road, Weymouth, Dorset DT4 9XD,  
United Kingdom

Tel: +44 (0)1305 47 00 00

Email: info@magicard.com

### Global offices

Europe  
Americas  
Asia  
UAE