

# 19" Android Advertising Displays



Stunning displays that combine tablet-like aesthetics with a robust mild steel enclosure and tempered glass face

## Plug and Play

Plug and Play is the most straightforward way to upload content to the screen. Simply load images and videos onto a USB stick, insert into the display, wait for your content to copy over and then remove. Your images and videos will now play in a continuous loop.



## Free Scheduling Software

These displays come with free scheduling software for displaying different content at different times of the day. If you prefer to keep it simple you can update the screen directly without using the software.



## 450cd/m<sup>2</sup> IPS Panel

Commercial grade IPS technology accurately displays image quality and colour depth with no fall-off in colour accuracy. These panels are designed to achieve ultimate lifelike colour temperature when used in either landscape or portrait.



## 24/7 Commercial Use

These displays use a commercial grade LCD panel and LED backlight. They have the ability to be in constant use 24/7 for over 70,000 hours and have no external buttons or controls to avoid tampering.



## Other Features

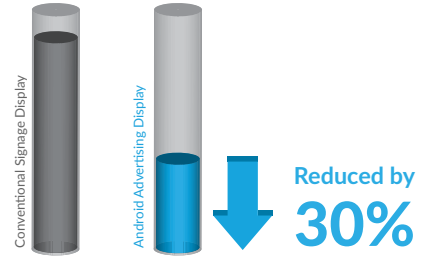
### Power Timer

The eco-friendly power timer allows you to assign daily or weekly on and off times for your screen meaning that it is only in use when it needs to be; improving your environmental efficiency.



### Low Power Consumption

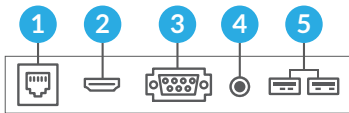
The LED backlight technology provides improved brightness and contrast. Their lifespan is drastically improved to over 70,000 hours and the power consumption is reduced by around 30%.



### Multiple Inputs

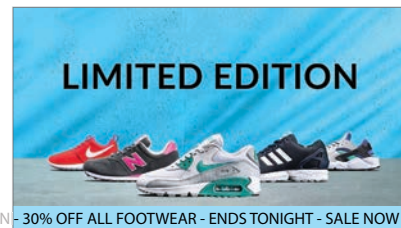
Should you need to use the screen as a monitor you can connect it to an external source, like a PC or media player, using the HDMI input or the VGA and 3.5mm audio jack inputs.

- 1 LAN
- 2 HDMI
- 3 VGA
- 4 Audio in
- 5 2 x USB



### Scrolling Text

You can display a "ticker tape" style scrolling text message along the bottom of the screen, to help you get your message across or help highlight any specific promotions or offers.



### Giant Tablet Styling

Their tempered glass face, rounded corners, super slim profile and aluminium surround all add to the captivating tablet-like aesthetics as well as protecting the internal components from potential damage.



### Wide Viewing Angle

Thanks to the IPS technology these displays provide fantastic image quality with a remarkable viewing angle of 178° in both landscape and portrait.



### Free Wall Mount

A super slim wall mount is included at no extra cost, allowing you to mount your screen in either landscape or portrait orientation; ensuring that you have a complete turnkey solution.



### Optional Network Upgrade

For a small charge you can upgrade your screen to be networked, allowing you to connect your screen via Wi-Fi, LAN or 4G, then remotely update it over the internet.



# Key Features



PLUG AND PLAY



INTEGRATED ANDROID  
MEDIA PLAYER

# IPS

IPS PANEL



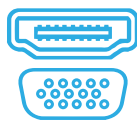
24/7 COMMERCIAL GRADE



LANDSCAPE OR PORTRAIT  
ORIENTATION



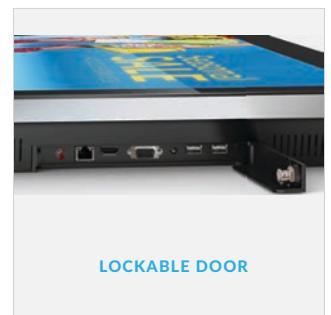
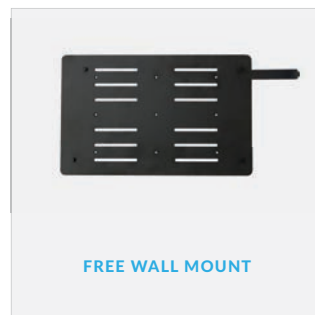
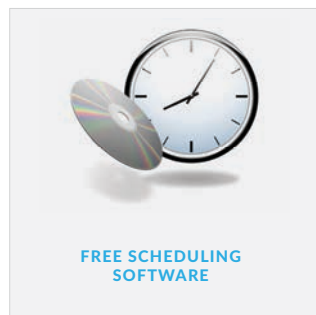
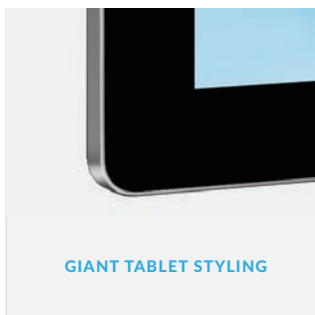
CONNECT DEVICES



LED BACKLIGHT



OPTIONAL NETWORK UPGRADE

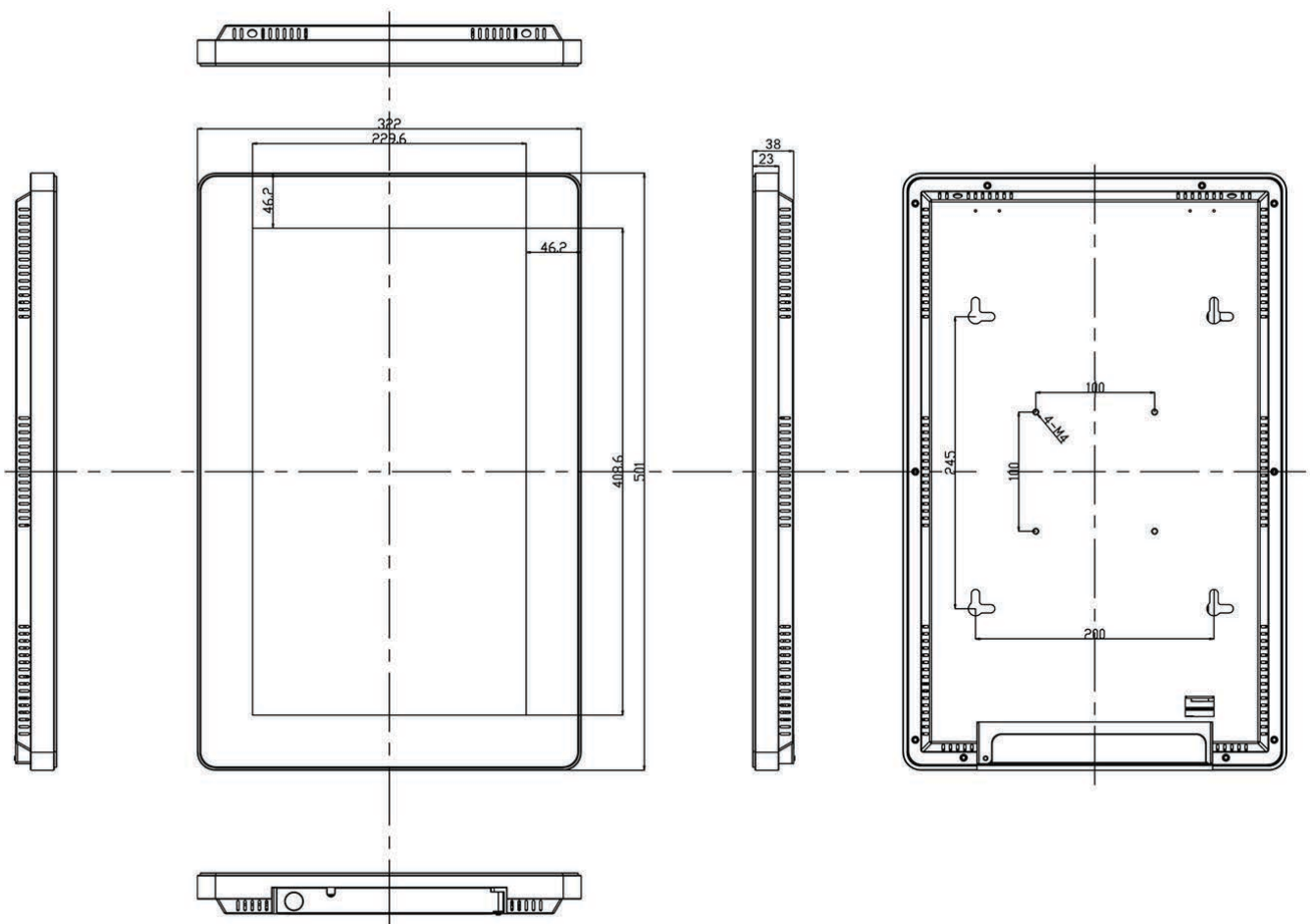


## Specification Table

		19 Inch		
Panel	Resolution	1366x768		
	Display Area (mm)	408.6x229.6		
	Aspect Ratio	16:9		
	Brightness (cd/m <sup>2</sup> )	350		
	Colour	16.7M		
	Viewing Angle	178°		
	Contrast Ratio	5000:1		
Audio	Speaker Type	5W, 8Ω (x2)		
AV Inputs	Video	HDMI, VGA		
	Audio	Audio Socket (3.5mm)		
Power	Power Consumption (W)	16		
	Input Voltage	AC110~240V (50Hz~60Hz)		
Mechanical	Unit Size (WxHxD mm)	501x322x38		
	Package Size (WxHxD mm)	578x418x118		
	VESA Holes (mm)	100x100		
	Net Weight (kg)	6.3		
	Gross Weight (kg)	7.35		
Environmental	Operating Temperature	0 °C to 50 °C		
	Storage Temperature	-30°C to 60°C		
	Operating Humidity	10% to 80%		
	Storage Humidity	5% to 95%		
Media Formats	Video (MPG, AVI, MP4, RM, RMVB, TS), Audio (MP3, WMA), Image (JPG, GIF, BMP, PNG)			
Media Resolution	1920x1080/1080x1920			
CPU	Quad-Core ARM Cortex A17, 1.6GHz			
GPU	Quad-Core ARM Mali-T764			
Computer	RAM	DDR3 2GB		
	ROM	8GB eMMC		
	USB	1 x USB (OTG/HOST), 4 x USB (HOST)		
	LAN	100M/1000M Ethernet (Network Version Only)		
	Wi-Fi	802.11b/g/n/ac (Network Version Only)		
	Bluetooth	Bluetooth 4.0		
	OS	Android 7.1		
	Graphic Engine	OpenGL ES 1.1/2.0/3.0/3.1, OpenCL 1.1, Renderscript, Direct3D 11.1		
	Accessories	Included	Special Wall Mount, Scheduling Software, Remote Control, Key, User Manual	
		Optional	Network Upgrade, Touch Screen Version, Wall Mount, Floor Stand/Trolley, Ceiling Mount, Table Stand	
Warranty	Warranty Period	3 Year Warranty		
	Technical Support	Lifetime		

Errors and omissions excepted





# Why Choose Our Commercial Display Solutions?



## Lifetime Technical Support

From the moment you receive your product, throughout the duration of your warranty and even after your warranty has expired we are here to support you. If you require any assistance setting up or using your product, or have any problems at all, we can provide free technical support via telephone and email.



## On-site Support and Maintenance\*

If needed, we can provide an installation service for any of our products. We can also set up service-level agreements for larger projects that require maintenance contracts.



## Extended Warranty\*

All of our commercial display products come with a 3 year commercial warranty as standard but if you want to extend this you can upgrade this to cover a 5 year period at point of purchase.



## Training

As well as providing free remote CMS training sessions and webinars we can also visit you to deliver bespoke training for our software and hardware\*.



## Advanced Replacements†

Should your display suffer from any kind of hardware failure during the warranty period we will send you an advanced replacement and arrange for your old display to be collected, free of charge. This ensures no downtime where you are without a screen.



## Custom Product Testing & Configuration

If you need us to test third party software or a website, or configure your screen in a particular way before it is dispatched (e.g. in a particular orientation or network mode), we can do so to make your life easier.



## 3D Rendering

Want to know how a particular screen will look once installed? Send us a photo of the location and we will create a 3D rendering of any screen in situ to help you to visualise how amazing it will look.



## Logistics Support

We hold more stock in our UK warehouse than any other manufacturer so we can help you meet tight deadlines. For last minute orders we can also offer special express or morning delivery options\*. We also carry out UK based quality control checks on every display before it leaves our warehouse.



## Project Support

If you need to loan a sample unit to test we'd be more than happy to arrange this. We can also provide a rental service for temporary projects\*.



## Customisation\*

Your display can be customised to suit your requirements by adding your logo or printed graphics or even tailoring the colour of a display. We can also carry out hardware modifications to existing products or manufacture bespoke solutions for special projects.



## Extras\*

As well as being able to provide accessories and add-ons, such as extra remote controls, NUC PCs and video wall controllers, we can also supply custom made flight cases which are great if a display needs to be moved safely from place to place.

†UK mainland only

\*These particular services may incur additional charges